

UPS-16JT

Mining shotcrete machine

Product introduction:

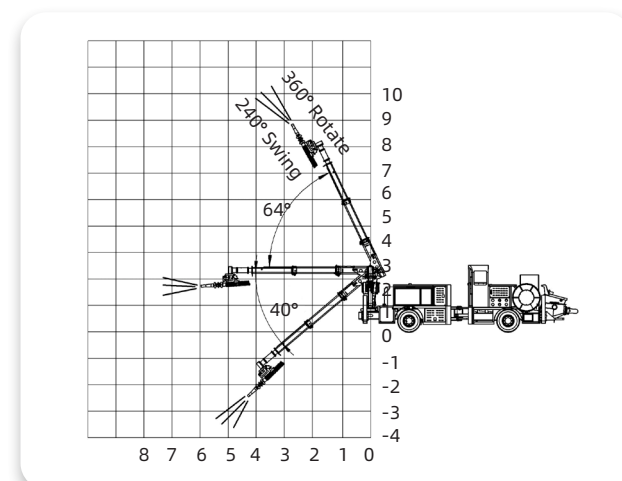
- UPS-16JT is a special wet spraying equipment designed and developed by our company to meet the construction requirements of mechanized, intelligent, uniform and no-dead-angle spraying. It is widely used in metal and non-metal mine tunnels, hydraulic tunnels, underground buildings (military and civilian), road slope wet spraying support and spraying concrete operations without explosion hazards. This machine is easy to operate, flexible, safe and reliable, with high working efficiency and less rebound.



Main features:

- The highest point of the whole machine is 2.35m above the ground, with a closed hydrostatic drive engineering chassis, four-wheel drive, hydraulic wet dual brake system, driving oil brake, and parking closed spring brake, which meets the safety requirements of long slopes and low tunnels in mines.
- Fully integrated proportional wireless + wired dual-control remote control, all control operations in the system are performed through the remote control to reduce labor intensity and improve construction safety and efficiency.
- The electronic control system uses a German ifm dedicated controller and a customized human-machine interface, multi-parameter operation monitoring and fault alarm.
- The admixture dosage and concrete pumping volume are intelligently synchronized, so that the admixture always maintains the preset ratio with the concrete output, and can be monitored and adjusted in real time through the human-machine interface or remote control.
- External power supply 380V/660V/1140V can be selected at will

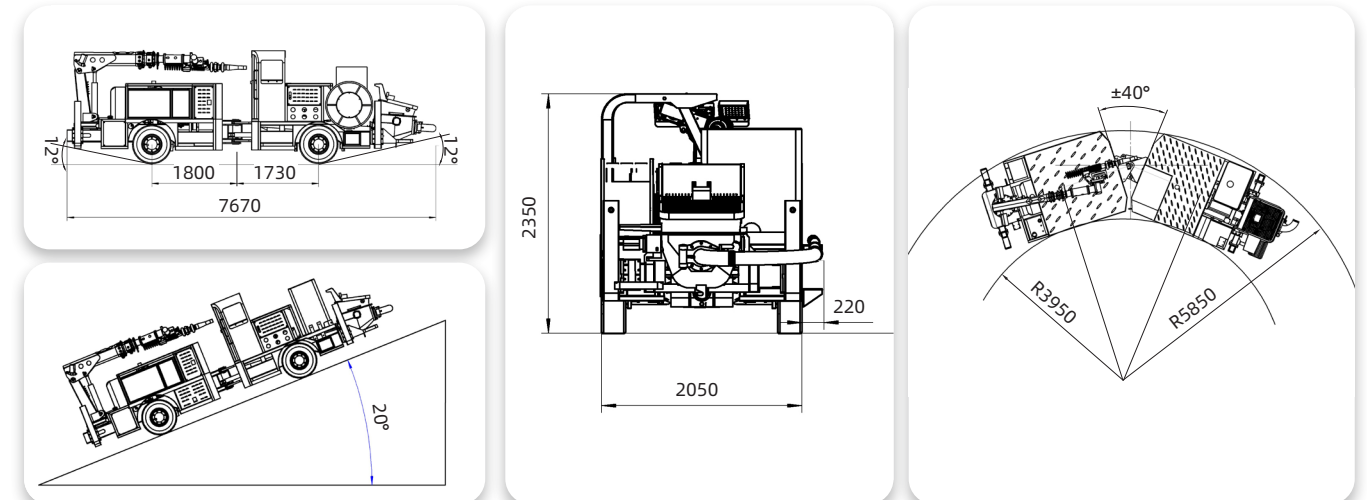
Working Scope:



Technical parameters:

Item	Parameter
Overall dimensions (L x W x H)	7670x2050x2350mm
Machine weight	10700kg
Engine rated power and speed	Yuchai 88kW/2500rpm
Total motor power (pumping + air compressor)	60kW (30kW+30kW)
Drive type, steering method	Closed hydrostatic four-wheel drive, articulated steering
Braking system	Driving: Hydraulic wet brake, dual-bridge independent hydraulic power-assisted dual-circuit oil-immersed multi-disc brake Parking: Closed spring brake, hydraulic release, fail-safe parking brake
Max. Driving speed	12km/h
Max. Climbing ability	20°
Min. Turning radius	Inner: 3950mm; Outer: 5850mm
Ground clearance	260mm
Actual concrete spraying capacity	16m³/h
Sprayed concrete aggregate particle size	25mm
Hopper volume	0.4m³
Hopper loading height	1.25m
Boom operation method	Dual control: 16m wired + 100m wireless remote control
Max. Effective upward spraying range	10m
Max. Effective forward spraying range	8m
Max. Effective downward spraying range	3m
Effective spraying width	16m
Air compressor rated exhaust pressure	0.55MPa
Accelerator pump type	Hose pump
Accelerator tank volume	500L
Cable specifications	3x35+1x16mm²
Cable length	100m
Tire	Mining solid tire

Schematic diagram:



Note: Due to different customer needs, the parameter settings may vary. Our company reserves the final right of interpretation for the above content. If you need product customization or to get a quote, please call the consultation hotline +86 15215510300 or send an email to lance@ah-jarlo.com