

XMPYT-81/460(A)

Scaling rig



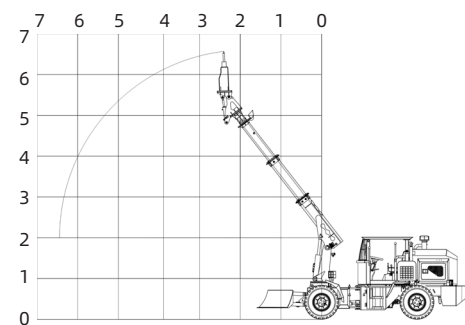
Product introduction:

- XMPYT-81/460 (A) is a special equipment for scaling and clearing small and medium-sized tunnels. It is mainly suitable for prying operations in metal mines and various underground engineering tunnels. It can quickly and effectively remove the broken and unstable loosen stones on the top plate and both sides of the working face after blasting operations to ensure the safety of personnel and equipment on the operation site. The equipment is easy and flexible to operate, safe and reliable, simple to maintain, and low in cost.

Main features:

- The hydraulic torque converter and gearbox drive the engineering chassis, four-wheel drive, large torque, strong thrust, and good climbing performance.
- The cab meets the mine safety ergonomic design, centralized control, comfortable and convenient.
- The equipment uses the domestic Yunnei 81kW National IV engine, which has a high market share and low maintenance costs.
- The thickened high-strength steel boom has a strong load-bearing capacity and small boom vibration during work.
- The articulated special chassis has a smaller turning radius and meets the needs of shaft and tunnel operations to the maximum extent.
- It is equipped with a slag removal shovel, which can quickly and appropriately clean the blast pile before mucking, so that the scaling rig can go to the working face to clean the loosen stones on the roof and the side wall, with better passability and stronger adaptability.

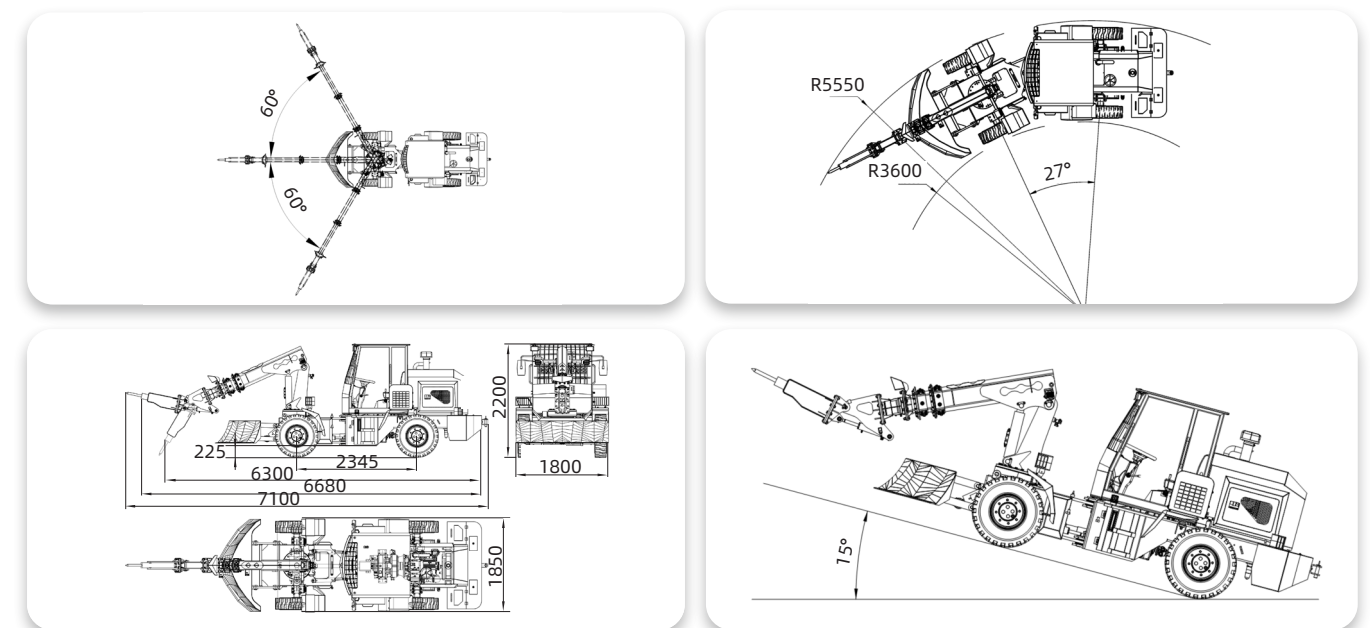
Working Scope:



Technical parameters:

Item	Parameter
Overall dimensions(L×W×H)	6300×1850×2200mm
Machine weight	5400kg
Engine rated power and speed	Yunnei 81kW/2400rpm
Cab	Fixed/lifting (optional)
Tires	Solid tires for mining
Drive mode, steering mode	Four-wheel drive with torque converter, articulated steering
Max. Driving speed	21km/h
Max. Climbing ability	15°
Min. Turning radius	Inner: 3600mm; Outer: 5550mm
Steering angle	27°
Ground clearance	225mm
Max. Scaling height	6000mm
Working arm left and right swing angle	±60°
Hammer head left and right swing angle	90°
Hammer head up and down swing angle	90°
Breaker manufacturer	Anrui
Breaker weight	80kg
Breaker impact energy	460J
Breaker impact frequency	11~20Hz(Adjustable range)
Drill rod diameter	45mm

Schematic diagram:



Note: Due to different customer needs, the parameter settings may vary. Our company reserves the final right of interpretation for the above content. If you need product customization or to get a quote, please call the consultation hotline +86 15215510300 or send an email to lance@ah-jarlo.com