

# XMPYT-48/460 (A)

## Scaling rig

### Product introduction:

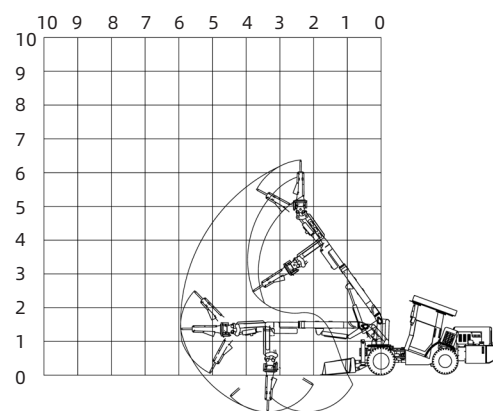
- XMPYT-48/460 (A) is a special equipment for scaling and clearing large and medium-sized tunnels. It is mainly suitable for scaling operations in metal mines and various underground engineering tunnels. It can quickly and effectively remove the broken and unstable loosen stones on the top plate and both sides of the working face after blasting operations to ensure the safety of personnel and equipment on the operation site. The equipment is easy and flexible to operate, safe and reliable, and has high work efficiency.



### Main features:

- Electronic-controlled closed hydrostatic drive engineering chassis, four-wheel drive, large driving torque, high bulldozing ability, and strong climbing performance.
- The electronic control system collects engine speed and load information, summarizes and processes it, and accurately controls the displacement of the oil pump in real time, making the chassis more maneuverable and safer, preventing braking and overload from stalling, and effectively protecting the engine and drive system.
- The cab meets the mine safety ergonomic design, has passed the two international certifications of FOPS anti-falling objects and ROPS anti-rollover, centralized control, reasonable layout, comfortable and convenient; at the same time, the cab can be raised and lowered, pitched, and convenient for personnel to operate accurately.
- Hydraulic wet dual braking system, driving oil brake, parking closed spring brake, meet the safety use requirements of long ramps and low tunnels in mines.
- The fully hydraulic telescopic and rotating mechanical arm has strong load-bearing capacity, stable movement, flexible operation, and no construction blind spots.
- The articulated special chassis has a smaller turning radius, which can meet the needs of mine and tunnel operations to the greatest extent.
- The breaker adopts the Korean engineer brand, with stable performance, flexible steering, high impact energy and small recoil force.
- The reinforced engineering chassis design enhances the rigidity and strength of the vehicle body, the vehicle weight is larger, and the scaling and crushing stability is better.
- The boom is equipped with an overload protection system, which can effectively protect the boom and hydraulic cylinder during the contact scaling operation.
- It is equipped with a slag removal shovel, which can quickly and appropriately clean the blast pile before mucking, so that the scaling rig can go to the working face to clean the loosen stones on the top plate and the side wall, with better passability and stronger adaptability.

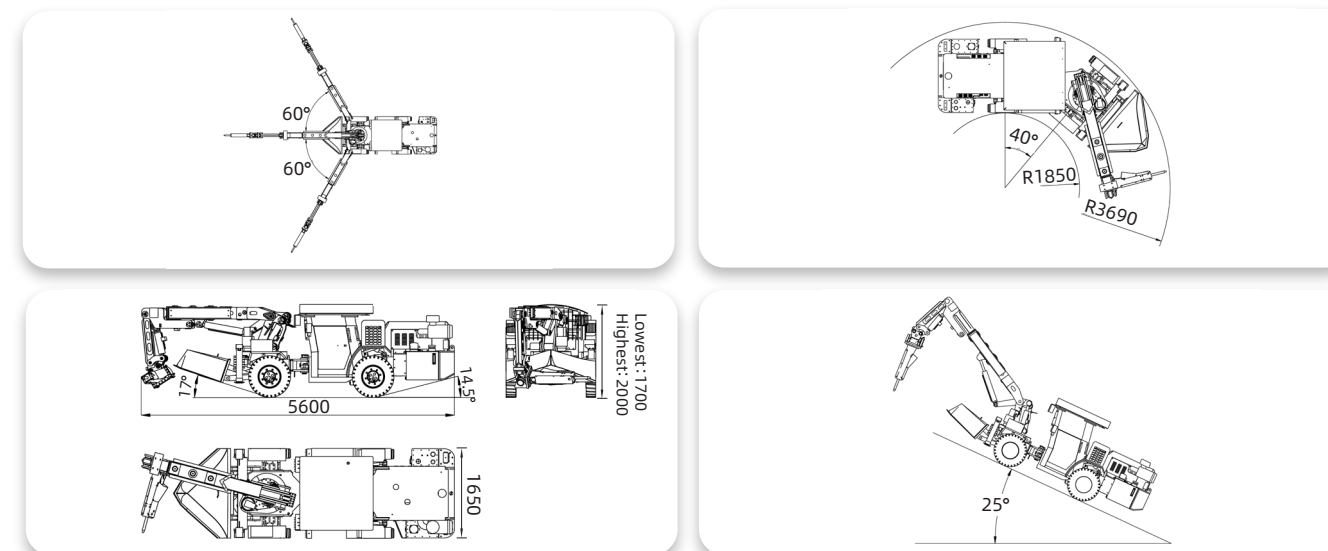
### Working Scope:



### Technical parameters:

Item	Parameter
Overall dimensions(L×W×H)	5600×1650×1700mm( Roof lowered ) 5600×1650×2000mm( Roof raised )
Machine weight	7200kg
Engine rated power and speed	Yuchai 48kW/2200rpm
Cab	Can be raised and lowered, pitched, with protective fence
Tires	Solid tires for mining
Drive mode, steering mode	Closed hydrostatic four-wheel drive, articulated steering
Max. Driving speed	11km/h
Max. Climbing ability	25°
Min. Turning radius	Inner: 1850mm; Outer: 3690mm
Steering angle	40°
Ground clearance	250mm
Max. Scaling height	6000mm
Working arm left and right swing angle	±60°
Hammer head left and right swing angle	180°
Hammer head up and down swing angle	180° ( Boom included )
Breaker manufacturer	Original imported Korean GB
Breaker weight	70kg
Breaker impact energy	460J
Breaker impact frequency	11~20Hz(Adjustable range)
Drill rod diameter	45mm

### Schematic diagram:



Note: Due to different customer needs, the parameter settings may vary. Our company reserves the final right of interpretation for the above content. If you need product customization or to get a quote, please call the consultation hotline +86 15215510300 or send an email to [lance@ah-jarlo.com](mailto:lance@ah-jarlo.com)