

UPS-12ZL

Mining shotcrete machine

Product introduction:

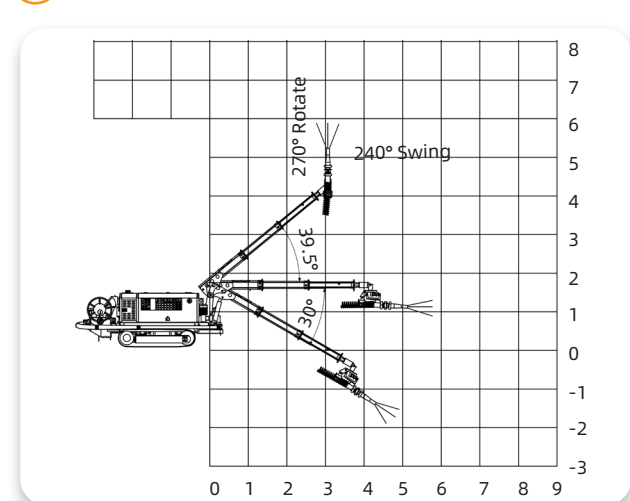
- UPS-12ZL is a low and compact wet concrete spraying machine developed for small-section mine tunnel concrete spraying operations. It is widely used in metal and non-metal mine tunnels, hydraulic tunnels, underground buildings (military and civilian), road slope wet spraying support and spraying concrete operations without explosion hazards. This machine has full functions, small size and high degree of integration. It adopts crawler walking chassis and wireless remote control. It is easy to operate, flexible, safe and reliable, and has strong adaptability to working conditions.



Main features:

- Self-propelled crawler chassis design, wireless remote control walking system, according to the needs of on-site construction, it can be moved or transferred to a suitable position at any time by relying on its own power.
- Fully hydraulic telescopic and rotating mechanical boom, strong carrying capacity, stable movement, flexible operation, no construction blind spot.
- Small size, can flexibly shuttle and operate in mines of different sizes.
- High degree of integration, built-in quick-setting agent pump, reducing on-site external components, complete functions, convenient for operators to perform spraying operations.
- Each wet spraying machine only requires two people, a spraying operator and an auxiliary staff, which reduces the investment in human resources.
- The pumping system assembly has good absorption of concrete, long service life, and is not easy to block the pipe.

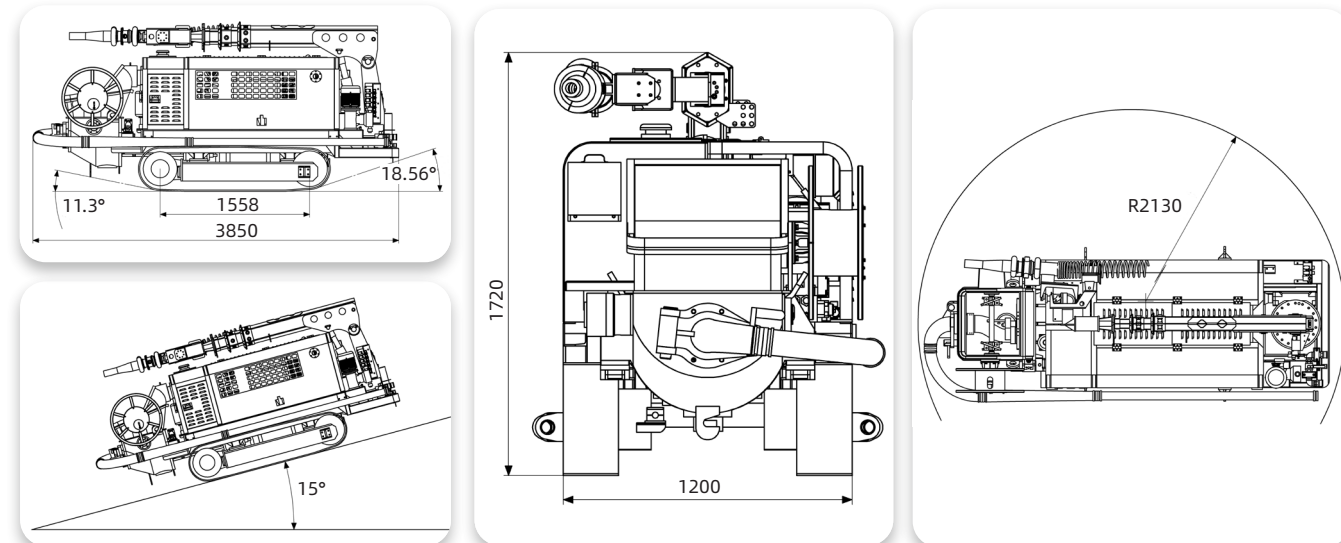
Working Scope:



Technical parameters:

Item	Parameter
Overall size(L×W×H)	3850×1200×1720mm
Total mass	4120kg
Rated engine power and rotation speed	Yuchai 16.3kW/2600rpm
Total electric motor power	18.5kW
Drive type, steering method	Hydraulic drive, wireless remote control driving
Braking system	Driving: hydraulic wet brake Parking: closed spring brake, hydraulic release, fail-safe parking brake
Max. Driving speed	4km/h
Max. Climbing ability	15°
Min. Turning radius	2130mm
Ground clearance	110mm
Actual concrete spraying capacity	12m³/h
Granite aggregate particle size	12mm
Bucket capacity	0.18m³
Bucket loading height	1.08m
Boom operation mode	100m wireless remote control
Max. Effective upward spraying range	6m
Max. Effective forward spraying range	6m
Max. Effective downward spraying range	2m
Widest effective spraying range	12m
Accelerator pump type	Diaphragm pump
Accelerator tank	External
Cable specifications	3×10+1×10mm²
Cable length	50m

Schematic diagram:



Note: Due to different customer needs, the parameter settings may vary. Our company reserves the final right of interpretation for the above content. If you need product customization or to get a quote, please call the consultation hotline +86 15215510300 or send an email to lance@ah-jarlo.com